

**SEADOCK**



***SHIPYARD PRESENTATION September 2023***

# Drydock Locations - Europe



- 
- A world map with a dark blue background. The continents are shown in a lighter blue. The European continent is highlighted in a solid red color, indicating the focus of the drydock locations listed.
- Blohm+Voss Germany
  - Lloyd Werft BREDO Germany
  - Emden Dockyard Germany
  - EDR Antwerp Belgium
  - Metalships Spain
  - Bulyard Bulgaria
  - Chalkis Greece
  - Onex Syros Greece
  - Onex Elefsis Greece
  - Desan Tuzla Turkey
  - Kuzey Star Tuzla Turkey
  - Gemak Tuzla Turkey
  - TK Tuzla Turkey
  - Tersan Yalova Turkey
  - Sefine Yalova Turkey
  - Ozata Yalova Turkey
  - Seltas Yalova Turkey

# Blohm + Voss | Hamburg | Germany

Blohm+Voss

Yard Area	451,000 m <sup>2</sup>
Waterfront	2,100 m <sup>2</sup>
Covered Build Facilities	92,000 m <sup>2</sup>
SlipWay	330 m x 52 m

Graving Dock 17	Length Over All (m)	351.2
	Breadth (m):	59.2
	Draft (m):	9.7
	For Ships up to:	320,000 dwt
	Lifting Capacity:	-
	Crane Capacity:	2x10 t, 1x50 t

Floating Dock 11	Length Over All (m)	320
	Breadth (m):	52
	Draft (m):	10.8
	For Ships up to:	250,000 dwt
	Lifting Capacity:	65,000 t
	Crane Capacity:	2x10 t, 2x35 t

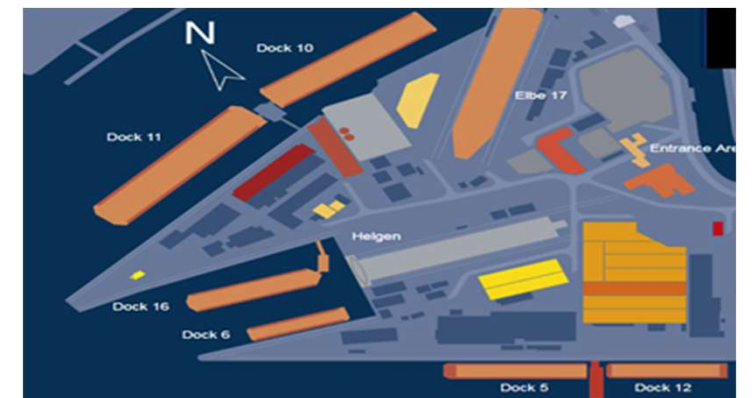
Floating Dock 10	Length Over All (m)	287.5
	Breadth (m):	44.3
	Draft (m):	10.2
	For Ships up to:	130,000 dwt
	Lifting Capacity:	50,000 t
	Crane Capacity:	2x15 t, 2x35 t

Floating Dock 16	Length Over All (m)	206
	Breadth (m):	32
	Draft (m):	9.5
	For Ships up to:	32,000 dwt
	Lifting Capacity:	20,000 t
	Crane Capacity:	2x15 t, 1x50 t

Floating Dock 6	Length Over All (m)	162.5
	Breadth (m):	24.5
	Draft (m):	8
	For Ships up to:	18,000 dwt
	Lifting Capacity:	9,000 t
	Crane Capacity:	-

Covered Floating Dock 5	Length Over All (m)	160
	Breadth (m):	28
	Draft (m):	8
	For Ships up to:	18,000 dwt
	Lifting Capacity:	9,000 t
	Crane Capacity:	2x15 t

Covered Floating Dock 12	Length Over All (m)	143
	Breadth (m):	25
	Draft (m):	8
	For Ships up to:	16,000 dwt
	Lifting Capacity:	6,000 t
	Crane Capacity:	2x15 t, 2x35 t





# Emden Dockyard | Emden | Germany



Waterfront	1,500 m <sup>2</sup>
Covered Build Facilities	100,000 m <sup>2</sup>
Crane Capacity	45 t

Graving Dock	Length Over All (m)	218
	Breadth (m):	30
	Draft (m):	7.5
	Lifting Capacity:	no maximum

Floating Dock III	Length Over All (m)	176.5
	Breadth (m):	27
	Draft (m):	6.5
	Lifting Capacity:	9,000 t

Floating Dock IV	Length Over All (m)	136.5
	Breadth (m):	17
	Draft (m):	6.5
	Lifting Capacity:	4,000 t





# Lloyd Werft | Bremerhaven | Germany



Yard Area	260,000 m <sup>2</sup>
Covered Warehouse Facilities	7,000 m <sup>2</sup>
Outfitting Piers	1400m

Graving Dock <b>Kaizerdock I</b>	Length Over All (m)	222
	Breadth Upper Part(m):	32
	Breadth at bottom (m)	26
	Draft (m):	9,3 over keel blocks

Graving Dock <b>Kaizerdock II</b>	Length Over All (m)	335
	Breadth Upper Part(m):	40
	Breadth at bottom (m)	35
	Draft (m):	11 over keel blocks

Floating Dock <b>III</b>	Length Over All (m):	281
	Breadth Clear (m):	38
	Draft (m):	5 over keel blocks
	Lifting Capacity (t)	35,000





# Lloyd Werft | Bremerhaven | Germany



Floating Dock 1	Length Over All (m)	116
	Breadth Clear (m):	16.4
	Lifting Capacity	3,800
	Draft (m):	4.8 over keel blocks

Floating Dock 2	Length Over All (m)	100
	Breadth Upper Part(m):	21.3
	Lifting Capacity	4,500
	Draft (m):	4.7 over keel blocks

Floating Dock 3	Length Over All (m)	158
	Breadth Upper Part(m):	23.9
	Lifting Capacity	7,500
	Draft (m):	6.2 over keel blocks

Floating Dock 4	Length Over All (m)	170
	Breadth Upper Part(m):	29.0
	Lifting Capacity	4,500
	Draft (m):	6.0 over keel blocks

Floating Dock 5	Length Over All (m)	215
	Breadth Upper Part(m):	35.0
	Lifting Capacity	20,000
	Draft (m):	6.0 over keel blocks

Floating Dock 6	Length Over All (m)	147
	Breadth Upper Part(m):	21.0
	Lifting Capacity	10,000
	Draft (m):	6.5 over keel blocks





# EDR Antwerp Shipyard | Belgium



Facilities	Berth:	2,000 m
	Open Storage	80,000 m2
	Closed Storage	16,000 m2
	Crane capacity	Up to 100tons
Graving Dock 3	Length Over All (m)	192
	Breadth Upper Part(m):	27
	Lifting Capacity	25,000 dwt
Graving Dock 4	Length Over All (m)	206
	Breadth Upper Part(m):	27
	Lifting Capacity	30,000 dwt
Graving Dock 5	Length Over All (m)	265
	Breadth Upper Part(m):	39
	Lifting Capacity	55,000dwt
Graving Dock 6	Length Over All (m)	312
	Breadth Upper Part(m):	50
	Lifting Capacity	No weight restrictions





# Metalships & Docks | Vigo | Spain



Covered Workshops	15,000 m <sup>2</sup>
Slipway up to	150 x 38 m

Floating Dock	Length Over All (m)	162
	Breadth (m):	28.5
	Draft (m):	6.7
	For Ships up to:	25,000 dwt
	Lifting Capacity:	10,000 t
	Crane Capacity	1x7 t, 1x5 t

Slipway 1 & 2 Covered	Length Over All (m)	150
	Breadth (m):	38
	Dock Lifting Capacities	3500 t
	Crane Capacity	1x140 t, 1x56 t, 1x25 t

Slipway 3 External (East)	Length Over All (m)	65
	Breadth (m):	12
	Dock Lifting Capacities	1,500 t
	Crane Capacity	1x16 t, 1x10 t, 1x2 t

Slipway 4 External (West)	Length Over All (m)	65
	Breadth (m):	9
	Dock Lifting Capacities	750 t
	Crane Capacity	1x16 t, 1x10 t, 1x2 t



# Desan Shipyard | Tuzla | Turkey

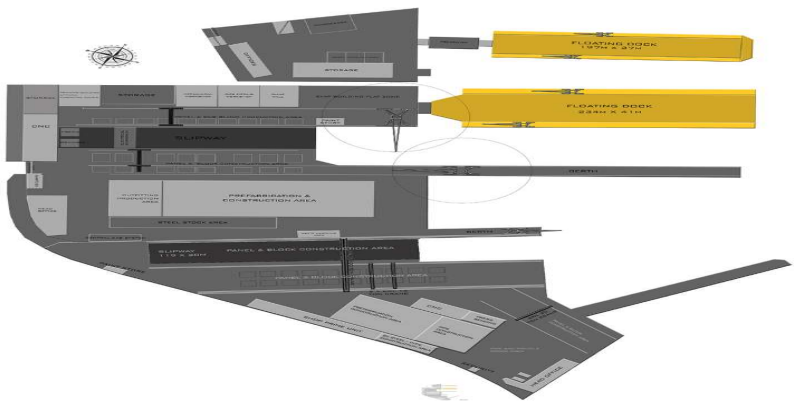


Yard Area (m <sup>2</sup> )	59,000 m <sup>2</sup>
Waterfront (m)	1,315 m
Covered Build Facilities (m <sup>2</sup> )	31,000 m <sup>2</sup>
Slipway (m)	132 x 23, 115 x 20

Floating Dock 1	Length Over All (m)	234
	Breadth (m):	41
	For Ships up to:	49,000 MT
	Crane Capacity	2 X 15 t

Floating Dock 2	Length Over All (m)	177
	Breadth (m):	27
	For Ships up to:	19,000 MT
	Crane Capacity	2 X 10 t

Floating Dock 3	Length Over All (m)	145
	Breadth (m):	25
	For Ships up to:	8,500 MT
	Crane Capacity	2 X 5 t





# Gemak|Tuzla - Altinova| Turkey



Yard Area Tuzla	45,000 m <sup>2</sup>
Covered Build Facilities	16,000 m <sup>2</sup>
Total Length of piers	421 m

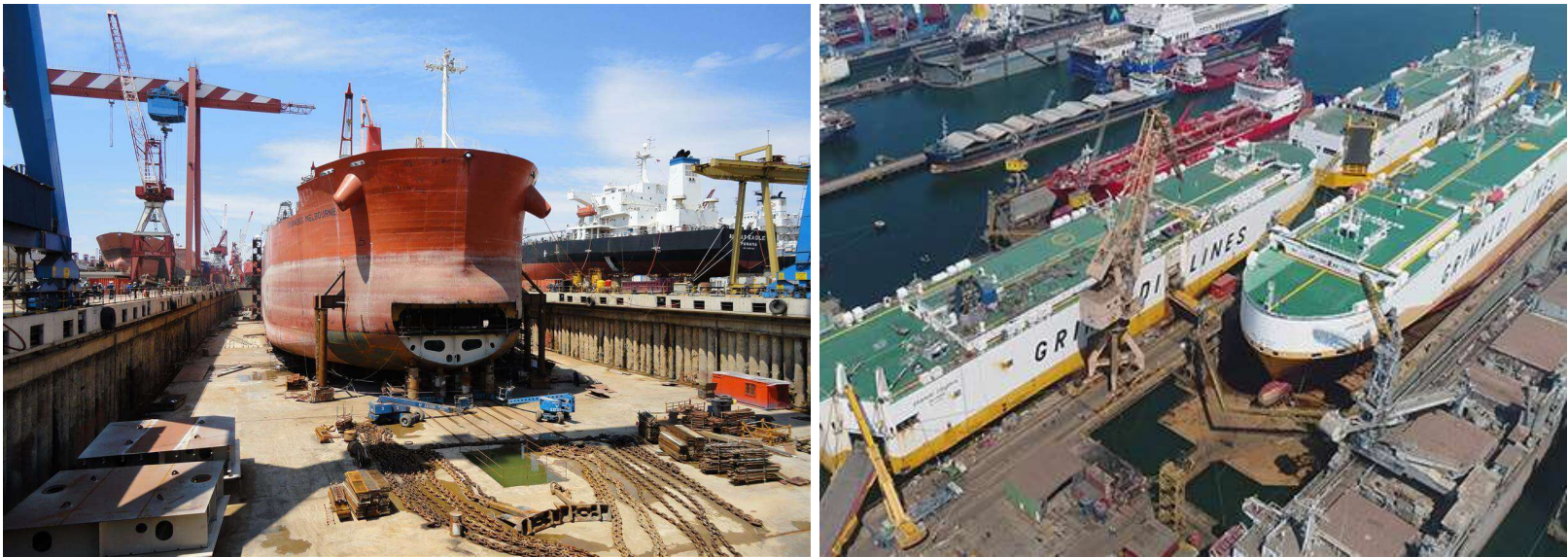
Floating Dock 1	Length Over All (m)	200
	Breadth (m):	32
	Lifting Capacity:	14,000 MT

Floating Dock 2	Length Over All (m)	245
	Breadth (m)	37
	Lifting Capacity	28,000 MT

Yard Area Tuzla (TGE)	87,000 m <sup>2</sup>
Covered Build Facilities	11,000 m <sup>2</sup>

Graving Dock	Length Over All (m)	300
	Breadth (m)	52

Slipway	Length Over All (m)	200
	Breadth (m):	44
	Lifting Capacity:	14,000 MT



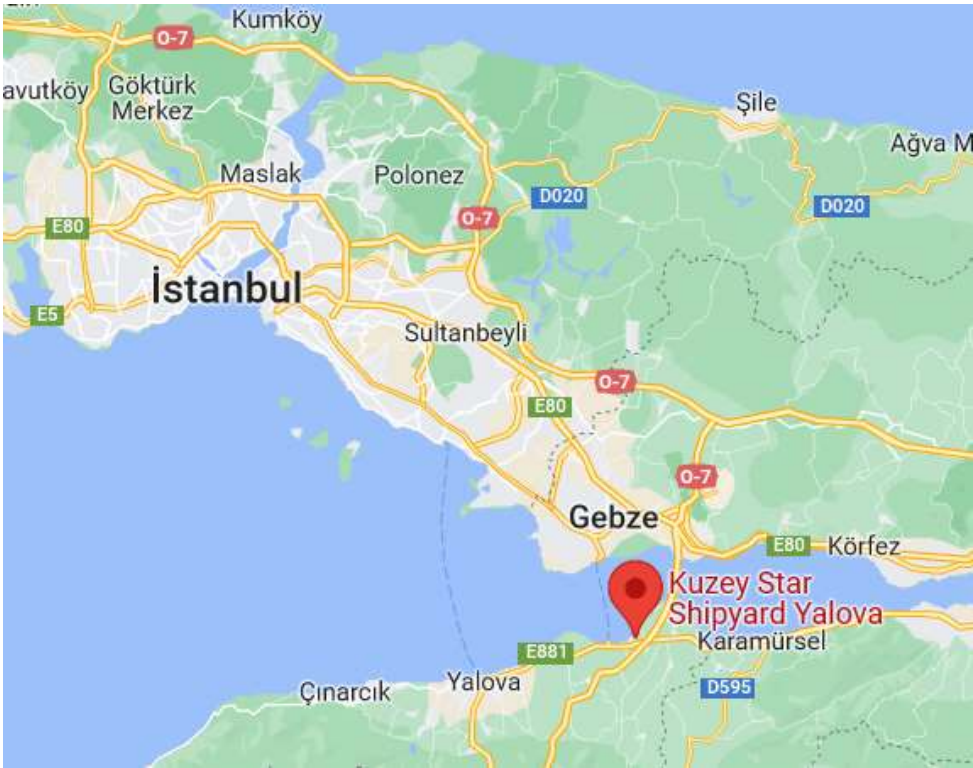


# Kuzey Star Shipyard | Tuzla | Turkey



Covered Workshops	32.000m2
Total Quay Length	2.000 m

Dock	Size (m)	Lifting Capacity
Nr. 1	205,3 x 33,2	13.000
Nr. 2	227,5 x 36,2	20.000
Nr. 3	300 x 52	43.000





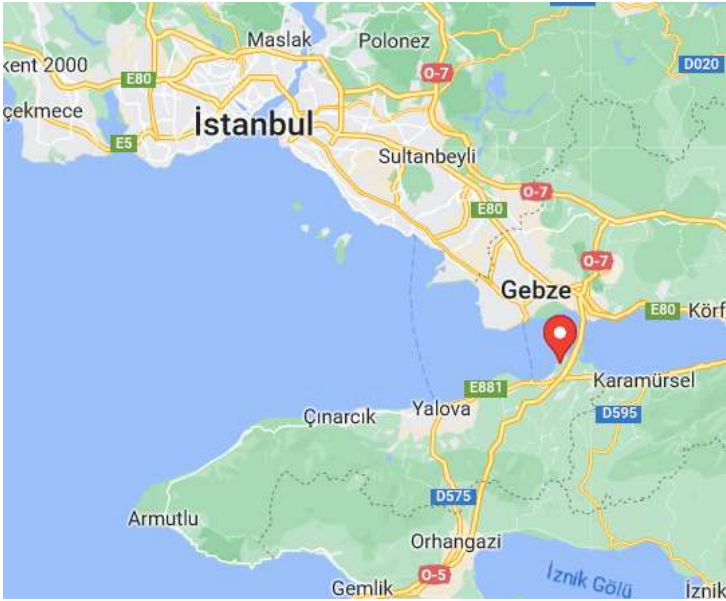
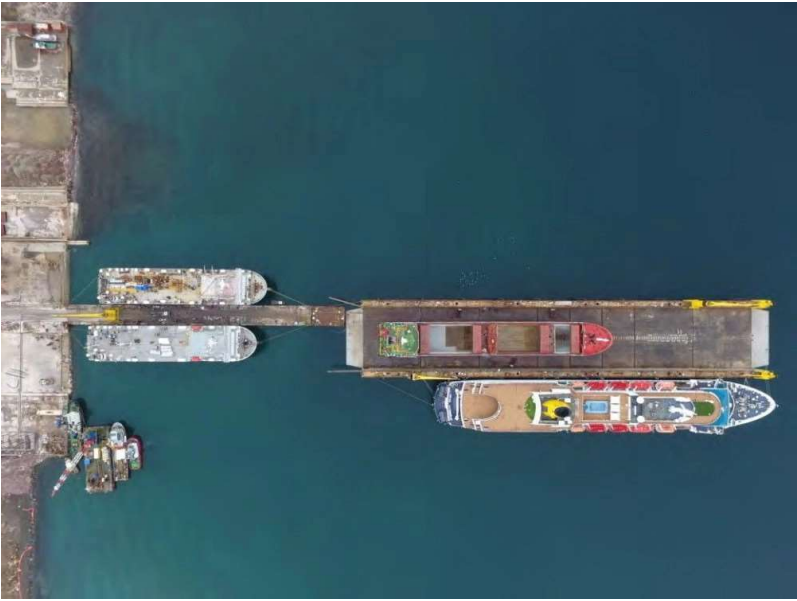
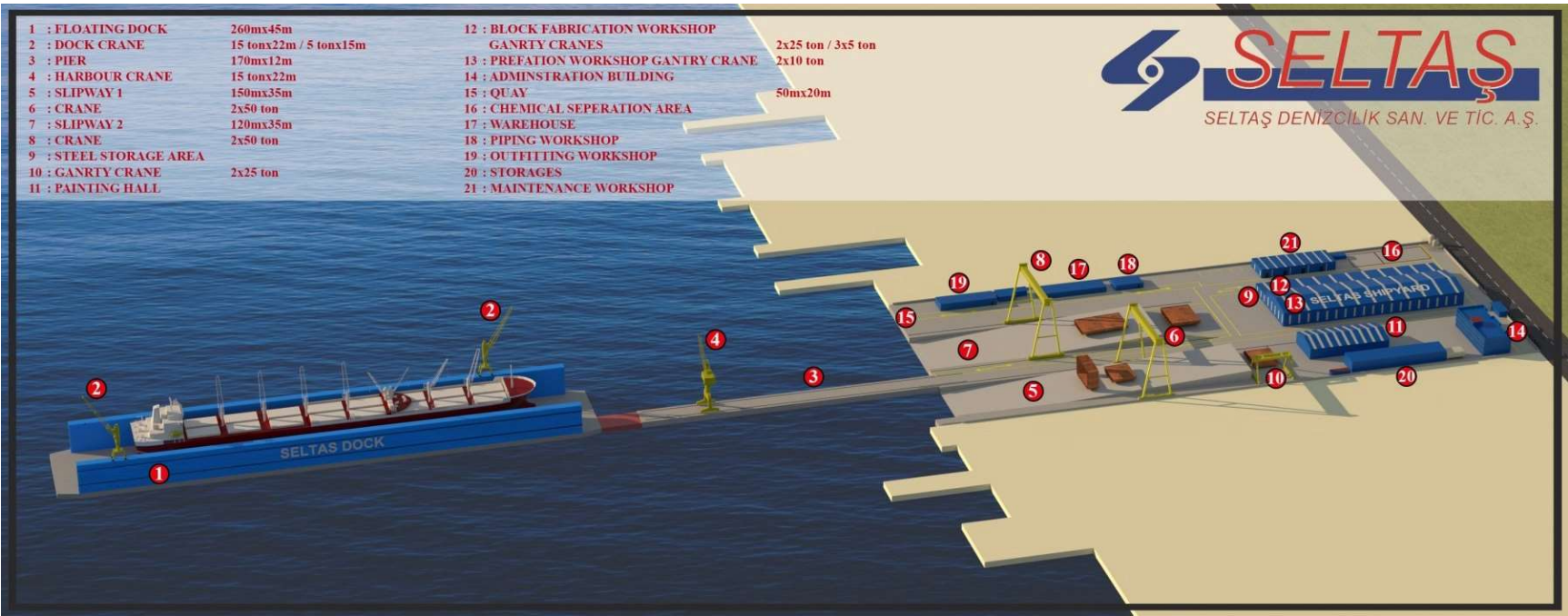
# Seltas Shipyard | Yalova | Turkey



Yard Area	50,000 m <sup>2</sup>
Covered Build Facilities	11,650 m <sup>2</sup>
Total Length of piers	170 x 12 m

Floating Dock 1	Length Over All (m)	260
	Breadth (m):	45
	Lifting Capacity:	10,000 t
	Crane Capacity	2 X 15 t

	Length (m)	Breadth(m)	Lifting Capacities
Slipway 1	150	35	2 x 50t
Slipway 2	120	35	2 x 50t





# Tersan Shipyard | Yalova | Turkey



Yard Area	350,000 m <sup>2</sup>
Closed area	70,000 m <sup>2</sup>
Berth	1500m

Floating Dock 1	Length Over All (m)	130
	Breadth (m):	22,5
	Lifting Capacity:	6,500 t
	Crane Capacity	2 X 5 t

Floating Dock 2	Length Over All (m)	180
	Breadth (m):	29
	Lifting Capacity:	9,000 t
	Crane Capacity	2 X 10 t

Floating Dock 3	Length Over All (m)	310
	Breadth (m):	51
	Lifting Capacity:	50,000 t
	Crane Capacity	2 X 25 t





# Sefine Shipyard | Yalova | Turkey



Yard Area	140,000 m <sup>2</sup>	
Berth	1600m	
Graving Dock	240 x 42	90.000 DWT
Floating Dock	282 x 47	120.000 DWT
Total Quay Length	3500m	



	SFN DOCK 1 Graving	SFN DOCK 2 Floating
LENGTH (M)	240	282
INNER WIDTH (M)	42	47
CAPACITY (DWT)	90.000	120.000
SIZE	Post Panamax	Aframax
TOTAL QUAY LENGTH		3500m

- 1-General Directorate Building
- 2-Naval Projects Building
- 3-Social Facility
- 4-Car Park
- 5-Warehouse
- 6-Pre-Production Workshop
- 7-Aluminium Workshop
- 8-Panel Workshop
- 9-CNC Workshop
- 10-Plate Stock Area
- 11-CNC Workshop
- 12-Piping Workshop
- 13-Paint Workshop
- 14-Pipe Outfitting Workshop
- 15-Mechanical Repair Workshop
- 16-Grid Warehouse
- 17-Piping Workshop
- 18-Compressor Building
- 19-Quay 1
- 20-Floating Dock
- 21-Plate Stock Field
- 22-Ship Building Workshop
- 23-Slipway
- 24-Dry Dock
- 25-Repair Jig Area
- 26-Waste Collection Area
- 27-Electrical Workshop
- 28-Quay 2
- 29-Quay 3



# Chalkis Shipyard | Evia | Greece



Floating Dock 1 - AVLIS	Length Over All (m)	195
	Breadth (m):	33,5
	Keel Blocks Height(m):	1,3
	Lifting Capacity:	15,000 t
	Crane Capacity	2 X 10 t

Floating Dock 1 - VATHI	Length Over All (m)	151
	Breadth (m):	21
	Keel Blocks Height(m):	1,3
	Lifting Capacity:	7,500 t
	Crane Capacity	2 X 3 t



# Onex Shipyard | Neorion Syros | Greece



Yard Area  Covered Build Facilities  Total Length of piers	61,078 m <sup>2</sup>	
	25,984 m <sup>2</sup>	
	1,800 m	
Floating Dock 1	Length Over All (m)	254
	Breadth (m):	35
	Lifting Capacity (t):	25,000
	Deadweight (t)	75,000
Floating Dock 2	Length Over All (m)	215
	Breadth (m):	33.5
	Lifting Capacity (t):	14,000
	Deadweight (t)	40,000





# Onex Shipyard | Elefsis | Greece



Dock	Capacity	Length (m)	Breadth (m)
Floating nr 1	22000 DWT	162	24 (22,8)
Floating nr 2	75000 DWT	227	35 (32,2)
Floating nr 3	120000 DWT	276	41 (40)



# Bulyard | Varna | Bulgaria



Yard Area	305,000 m <sup>2</sup>
Covered Build Facilities	94,000 m <sup>2</sup>
Steel Repairing Quay	1,200 m

Graving Dock 1	Length Over All (m)	240
	Breadth (m):	40
	Docking Draft (m):	7
	Crane Capacity	1 x 80 t, 4 x 80t

Graving Dock 2	Length Over All (m)	190
	Breadth (m):	28
	Docking Draft (m):	6
	Crane Capacity	1 x 500 t, 4 x 80t





# Santierul Naval Constanta S.A. | Romania



Floating Dock 1	Length Over All (m)	138
	Breadth (m):	23
	Depth(m):	4
Floating Dock 2	Length Over All (m)	180
	Breadth (m):	32
	Depth (m):	7
Graving Dock 1	Length Over All (m)	350
	Breadth (m):	58
	Depth (m):	10
Graving Dock 2	Length Over All (m)	350
	Breadth (m):	48
	Depth (m):	10



# Drydock Locations – Middle East





# Nakilat - Keppel Offshore & Marine Ltd (N-KOM) | Qatar



Yard Area	78,000m <sup>2</sup>
Repair Berths	20,460 m <sup>2</sup>
Floating Quay	200m x 5m
Production Support Facility	75m x 30m

Berths	8 Quays
	3,000m of Piers
	1 Unloading Quay of 150m



Drydock 2	Length Over All (m)	400
	Breadth (m):	80
	Docking Draft (m):	12
	For Ships up to :	400,000 dwt

Drydock 1	Length Over All (m)	360
	Breadth (m):	66
	Docking Draft (m):	11
	For Ships up to:	350,000 dwt

Floating Dock	Length Over All (m)	405
	Breadth (m):	66
	Dock CRANES	2X50T
	Lifting Capacity:	120,000T



# Drydock Locations – South Korea





# Han Kook Made & JK Heavy Industry – Mopko | South Korea



Floating Dock	Length Over All (m)	231.5
	Breadth (m):	47.8
	Depth(m):	19.5
	G/T:	21.399 t
	Crane Capacity	3 X 15 t
	Lifting Capacity	18.000 t



Block Building			
Shop	L 130m X B 25M	Equipment	Gantry Crane 300Ton x 1ea
	19.033 m <sup>2</sup>		Gantry Crane 70Ton x 4ea
Capacity	45.000 Tons/Year		O.H Crane 15Ton x 2ea
			O.H Crane 20Ton x 2ea
			O.H Crane 30Ton x 3ea
Record	2017: 41.300 Tons		O.H Crane 60Ton x 3ea
	2018: 43.700 Tons		O.H Crane 70Ton x 2ea
	2019: 43.500 Tons		Transporter x 2ea
	2020: On Going		Barge x 2ea



# Drydock Locations – North China



- Shanhaiguan, Qinhuangdao
- Qingdao Beihai
- Stonestar Ship Repair, Rongcheng
- Weihai Huadong
- CUD Weihai
- CMI Yiu Lian Dockyards
- DSIC Changxingdao, Dalian
- Cosco Dalian



# Stonestar Ship Repair | Weihai | China



Yard Area (m <sup>2</sup> )	252,717
Wharf Length (m)	1,200
No. of Berths	7

Graving Dock	Length Over All (m)	320
	Breadth (m):	41.5
	Draft (m):	
	Gantry Crane:	450T x 1

Floating Dock	Length Over All (m)	200
	Breadth (m):	37
	Draft (m):	
	Gantry Crane:	450T x 1



# Weihai Huadong Ship Repair | China



Yard Area (m <sup>2</sup> )	80,000
Wharf Length (m)	3,950
No. of Berths	10



Graving Dock 1	Length Over All (m)	240
	Breadth (m):	39.5
	Draft (m):	11.8
	Shore Crane:	1 x 65T, 2 x 25T

Name	Length(m)	Draft(m)	Capacity
Wharf No.1	600m	-12m	40T x 75m x 1, 30T x 45m x1
Wharf No.2	463m	-12m	40T x 75m x 1, 30T x 45m x1
Wharf No.3	383m	-12m	40T x 75m x 1, 30T x 45m x1
Wharf No.4	383m	-12m	40T x 75m x 2
Wharf No.5	384m	-12m	40T x 75m x 1, 30T x 45m x1
Wharf No.6	288m	-12m	40T x 75m x 1, 30T x 45m x1
Wharf No.7	271m	-12m	40T x 70m x 1, 40T x 75m x1
Wharf No.8	230m	-12m	40T x 75m x 1, 30T x 60m x1
Wharf No.9	200m	-12m	30T x 45m x 1, 15T x 45m x1
Wharf No.10	198m	-12m	30T x 45m x 1, 5T x 45m x1

Graving Dock 2	Length Over All (m)	280
	Breadth (m):	48
	Draft (m):	11.8
	Shore Crane:	1 x 65T, 2 x 25T





# CUD (WEIHAI) Shipyard| China



Graving Dock 1	Length Over All (m)	355
	Breadth (m):	78
	Depth (m):	14
	Crane:	60T/50m x 1set 80T/60m x 1set

Graving Dock 2	Length Over All (m)	325
	Breadth (m):	54
	Depth (m):	13
	Crane:	40T/40m x 1set 80T/60m x 1set

Quay	L x D (m)	Crane
1	160 x 7,5	100T Mobile
2	450 x 9,5	50T x 70m
3	450 x 9,5	25T x 25m
4	240 x 8	200T Mobile
5	160 x 7,5	80T Mobile
6	240 x 6,5	20T x 20m
East 1	580 x 9,5	-//-
East 2	420 x 12	-//-
East 3 & 4	1200 x 12	-//-



Slipway	L x B (m)	DWT	Crane
1	300 x 40	25.000	40T/40m x 1 set
2	320 x 40	20.000	40T/40m x 1 set
3	300 x 30	8.000	40T/40m x 1 set





# Beihai Shiprepair Branch | Qingdao | China



Yard Area (hectares)	330
Waterfront (m)	9,000
Wharf Length (m)	6,000

Graving Dock 1	Length Over All (m)	430
	Breadth (m):	78
	Draft (m):	13.1
	Gantry Crane:	500T x 1

Graving Dock 2	Length Over All (m)	405
	Breadth (m):	58
	Draft (m):	13.1
	Gantry Crane:	200T x 1

Floating Dock	Length Over All (m)	250
	Breadth (m):	45
	Draft (m):	18
	Gantry Crane:	20T x 2 (Tower Crane)







# DSIC Shanhaiguan Shipbuilding Industry | Qinhuangdao | China

Total Yard area	3.116.000 m <sup>2</sup>
Harbour basin area	1.028.000 m <sup>2</sup>
19 Quays total Length (m)	5.641,6 m

Dock	Length (m)	Breadth (m)	Depth (m)
Nr.1	240	39	11,4
Nr.2	340	6	12,8
Nr.3	320	56	13,3
Nr.4	260	50	13





# DSIC Changxingdao Shipyard | Dalian | China



Total Yard area	3.116.000 m <sup>2</sup>
Harbour basin area	1.028.000 m <sup>2</sup>
Wharf total Length (m)	3.627 m

Dock	Length (m)	Breadth (m)	Depth (m)
Nr.1	420	68	15
Nr.2	330	58	13



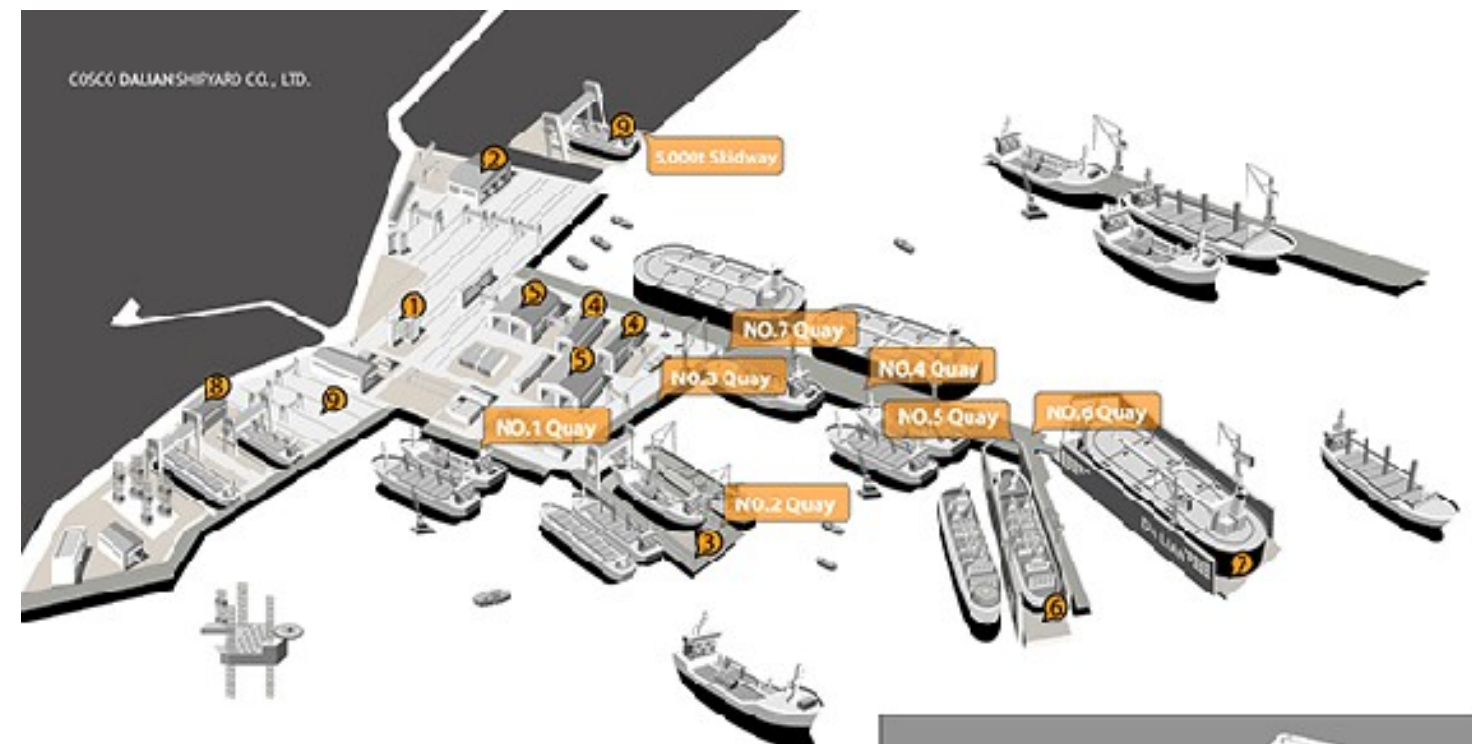


# Cosco Dalian Shipyard | Dalian China



Total Yard area	1.400.000 m <sup>2</sup>
Wharf total Length (m)	2.500 m

Dock	Length (m)	Breadth (m)	Depth (m)
Nr.1	350	66	9
Nr.2	260	48,5	8
Nr.3	240	40	7,5



1. Main Office
2. Dock Workshop
3. Dry Dock
4. Hull Workshop
5. Machinery and Electric Workshop
6. YuanYang No.1 Floating Dock
7. DaLian VLCC Floating Dock
8. Coating Workshop
9. Skidway



Songjia Newbuilding Industrial Park



# CMI Yiu Lian Dockyards Weihai | Weihai | China



Total Yard area	1.450.000 m <sup>2</sup>
Harbour basin area	1. 650.000 m <sup>2</sup>
Wharf total Length (m)	1.277m

Dock	Length (m)	Breadth (m)
Nr.1	389	50
Nr.2	296	50
Slipway	600	35





# Drydock Locations – Central China



- Huarun Dadong HRDD Shanghai
- Ruitai Shipyard
- Cosco Shanghai
- Cosco Nantong
- IMC Zhoushan
- Xinya Shipyard
- Paxocean Shipyard
- Huafeng Shipyard
- Longshan Shipyard

# Ruitai Shipyard | Nantong | China



Yard Area	396,000 m <sup>2</sup>
Repair Berth	480 m
Covered Build Facilities	20,000 m <sup>2</sup>

Floating Dock 1	Length Over All (m)	210
	Breadth (m)	35
	Moulded Depth (m)	17
	Crane Capacity	1x7 t, 1x5 t

Floating Dock 2	Length Over All (m)	240
	Breadth (m):	37
	Moulded Depth (m):	6
	Crane Capacity	1 x 15t, 1 x 50t

Other Facilities / Equipment	
Cherry Pickers	12 sets
SWL 15T Dock Cranes	4 sets
Gantry Cranes (4070 type)	2 sets





# HRDD Shipyard | Shanghai | China



Yard Area (m <sup>2</sup> )	1,020,000 m <sup>2</sup>
Waterfront (m)	2,300 m
Slipways	2,290 m

Floating Dock 3	Length Over All (m)	195
	Breadth (m):	36.5
	Draft (m):	6.8
	For Ships up to:	50,000 DWT
	Lifting Capacity (T)	18,000
	Crane Capacity	2 x 20T/33M



Floating Dock 1	Length Over All (m)	360
	Breadth (m):	68
	Draft (m):	7.8
	For Ships up to:	300,000 DWT
	Lifting Capacity (T)	60,000
	Crane Capacity	2 x 20T/33M

Floating Dock 4	Length Over All (m)	240
	Breadth (m):	39
	Draft (m):	6.8
	For Ships up to:	80,000 DWT
	Lifting Capacity (T)	22,000
	Crane Capacity	2 x 20T/33M

Floating Dock 2	Length Over All (m)	313
	Breadth (m):	55
	Draft (m):	6.8
	For Ships up to:	170,000 DWT
	Lifting Capacity (T)	38,500
	Crane Capacity	2 x 20T/33M

Graving Dock	Length Over All (m)	380
	Breadth (m):	103
	For Ships up to:	300,000 DWT
	Crane Capacity	2 x 50T, 2 x 45T, 800T Gantry Crane



# IMC Shipyard | Zhoushan | China

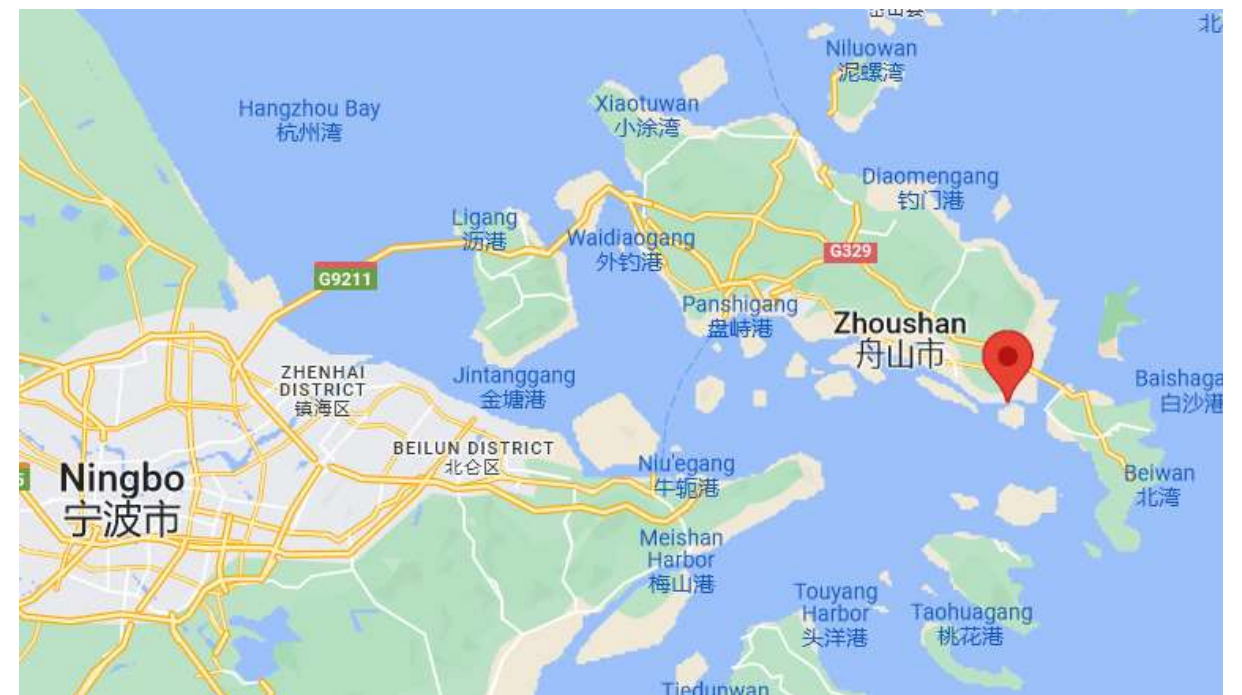
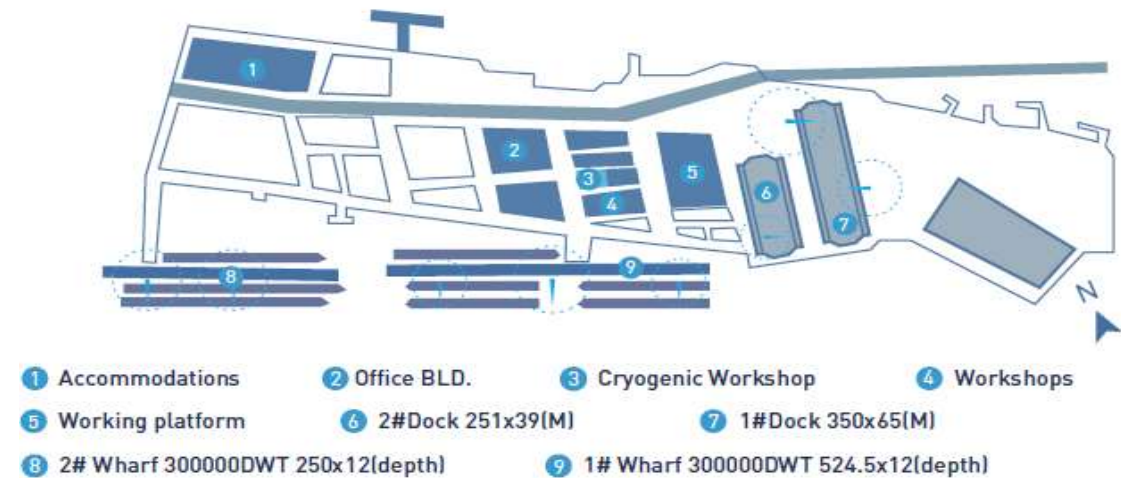


Yard Area (m <sup>2</sup> )	457,000 m <sup>2</sup>
Waterfront (m)	1,900 m

Graving Dock 1	Length Over All (m)	350
	Breadth (m):	65
	For Ships up to:	300,000 DWT
	Crane Capacity	1 x 40T, 1 x 25T

Graving Dock 2	Length Over All (m)	251
	Breadth (m):	39
	For Ships up to:	100,000 DWT
	Crane Capacity	1 x 25T

	Size	Cranes
Slipway 1	524.5 x 12 (depth)	1 x 45T, 1 x 40T, 1 x 25T
Slipway 2	250 x 12 (depth)	1 x 80T, 1 X 45T

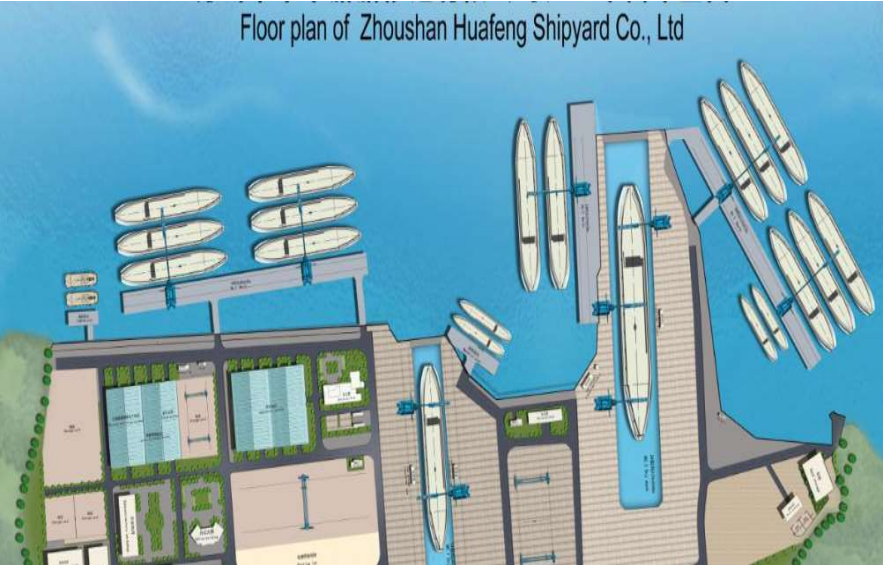




# Zhoushan Huafeng Shipyard Co. Ltd| China



Docks	Size (m)	DWT
Dock Nr. 1	302 x 4,5 x 13,5	100.000
Dock Nr. 2	420 x 68 x 14,5	300.000
Dock Nr. 3	400 x 80 x 14	300.000
Dock Nr. 4	560 x 40 x 12	800.000
Dock Nr. 5	360 x 68 x 12	300.000



# Xinya Shipyard | Zhoushan | China



Graving Dock 1	Length Over All (m)	610
	Breadth (m):	90,8
	Grade (t)	200,000
	Draft	12.5

Yard Area (m <sup>2</sup> )	230,000 m <sup>2</sup>
Waterfront (m)	1,500
Workshops	60,000 m <sup>2</sup>

Graving Dock 2	Length Over All (m)	230
	Breadth (m):	38
	Grade (t)	80,000
	Draft	10.9

Graving Dock 3	Length Over All (m)	402
	Breadth (m):	76
	Grade (t)	300,000
	Draft	14,5

Graving Dock 5	Length Over All (m)	340,8
	Breadth (m):	53
	Grade (t)	180,000
	Draft	13,5





# Paxocean Shipyard | Zhoushan | China



Yard Area	800.000 m2
West Pier	576m/ 12m draft

Graving Dock 1	Length Over All (m)	400
	Breadth (m):	106

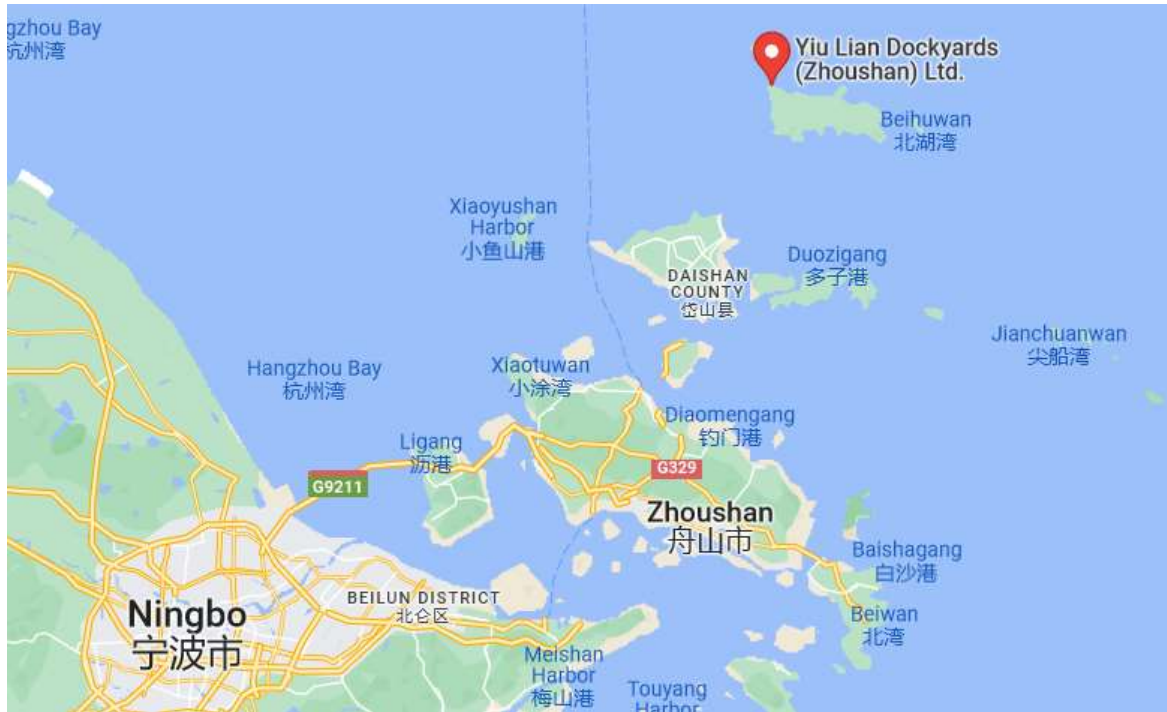
Graving Dock 2	Length Over All (m)	380
	Breadth (m):	80



# Yiu Lian Dockyards Zhejiang| Zhoushan | China



Graving Dock 1	Length Over All (m)	370
	Breadth (m):	76
Graving Dock 2	Length Over All (m)	310
	Breadth (m):	54





# Longshan Shipyard | Zhoushan | China



Yard Area (m²)	214,272
Wharf Total Length (m)	1060m

Graving Dock 1	Length Over All (m)	235
	Breadth (m):	40
	Capacity (t)	70,000
	Draft	11

Graving Dock 2	Length Over All (m)	310
	Breadth (m):	55
	Capacity (t)	200,000
	Draft	13

Name	Length(m)	Breadth(m)	Draft(m)
Wharf No.1	240m	17m	10m
Wharf No.2	220m	22m	10m
Wharf No.3	400m	34m	11m



# COSCO Shipping Heavy Industries | Shanghai | China



Yard Area	710,000 m <sup>2</sup>
Shore Line	4,100 m
Wharf Length	4,770 m

Floating Dock 1	Length Over All (m)	410
	Breadth (m):	72
	Docking Draft (m):	11
	Gantry Crane:	25t x 2, 15t x 2

Floating Dock 2	Length Over All (m)	308
	Breadth (m):	50
	Docking Draft (m):	8.5
	Gantry Crane:	25t x 2, 15t x 2

Floating Dock 3	Length Over All (m)	247
	Breadth (m):	36.6
	Docking Draft (m):	6.5
	Gantry Crane:	25t x 2, 15t x 1



Floating Dock 4	Length Over All (m)	225.5
	Breadth (m):	38
	Docking Draft (m):	6
	Dock cranes	25t x2, 15t x 2

Floating Dock 5	Length Over All (m)	190
	Breadth (m):	28
	Docking Draft (m):	6
	Dock cranes	25t x1, 5t x 1



# COSCO Shipping Heavy Industries | Nantong| China

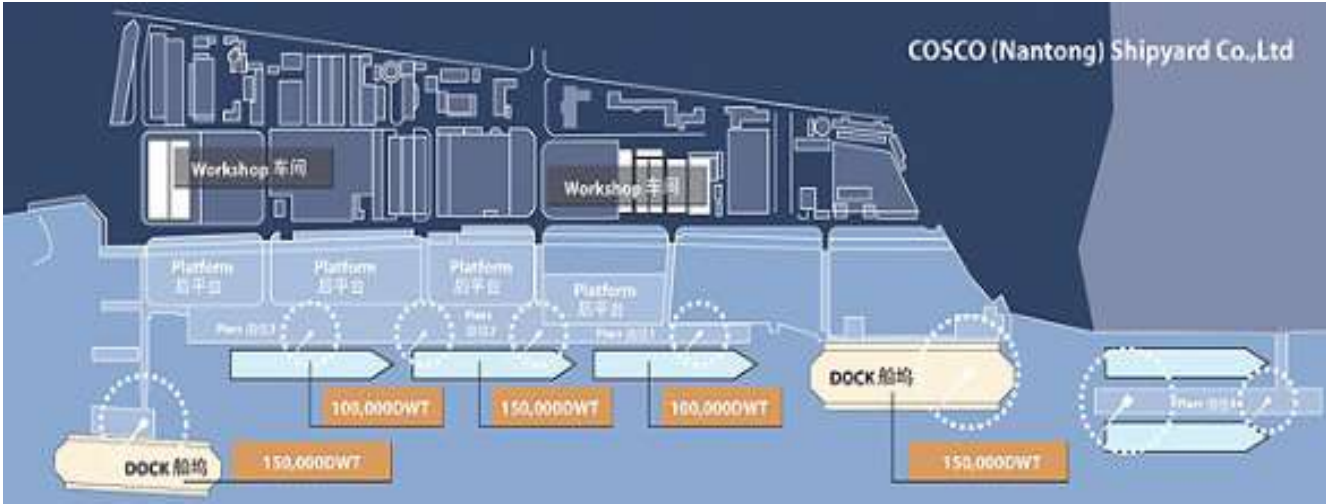


南通中远船务工程有限公司  
COSCO (NANTONG) SHIPYARD CO., LTD.

Yard Area	400,000 m <sup>2</sup>
Wharf Length	900 m

Floating Dock 1	Length Over All (m)	270
	Breadth (m):	48
	Docking Draft (m):	9.5
	Gantry Crane:	24t x 1, 22t x 2, 15t x 1

Floating Dock 1	Length Over All (m)	230
	Breadth (m):	42
	Docking Draft (m):	8
	Gantry Crane:	22t x 2, 5t x 1



# Drydock Locations – South China



- Cosco Guangzhou Guang Dong
- Guangzhou Wenchong
- Yiu Lian Dockyards Shekou
- Yiu Lian Dockards Hong Kong
- Fujian Huadong



# Fujian Huadong Shipyard| China



Yard Area (m²)	700,000
Waterfront (m)	2,250
Wharf Length (m)	1,300

Graving Dock 1	Length Over All (m)	375
	Breadth (m):	72
	For Ships up to (dwt):	400,000

Graving Dock 2	Length Over All (m)	295
	Breadth (m):	50
	For Ships up to (dwt):	170,000

Graving Dock 3	Length Over All (m)	245
	Breadth (m):	41.8
	For Ships up to (dwt):	100,000



# Yiu Lian Dockyards (Shekou) | Mazhou Islands | China



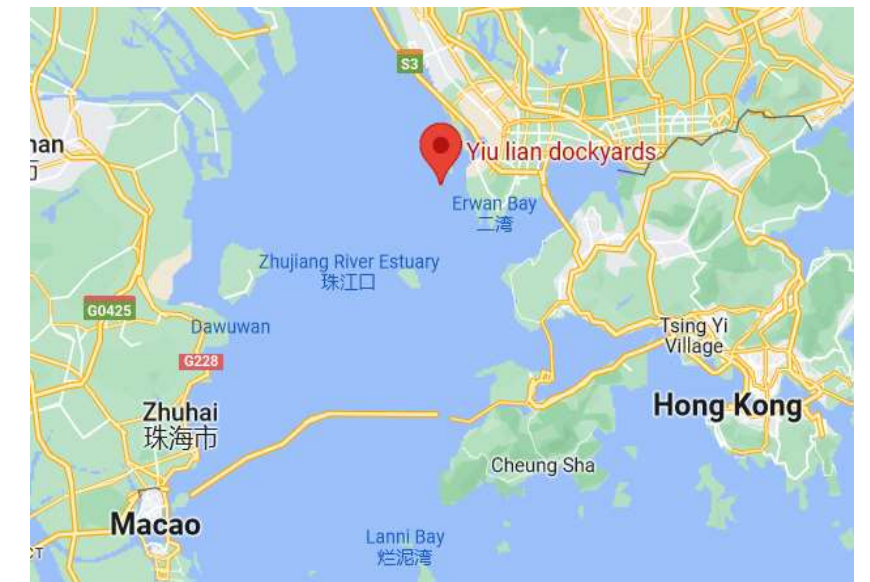
<b>Graving Dock 1</b>	Length Over All (m)	400
	Breadth (m):	83
	Draft (m):	8
	For Ships up to:	Over 300,000 dwt
	Lifting Capacity (mt):	
	Crane Capacity:	40 (t)x2/ 100(t) x1

<b>Graving Dock 2</b>	Length Over All (m)	360
	Breadth (m):	67
	Draft (m):	8.5
	For Ships up to:	300,000 dwt
	Lifting Capacity (mt):	
	Crane Capacity:	40 (t)x2/ 100(t) x1

<b>Floating Dock 3</b>	Length Over All (m)	240.5
	Breadth (m):	36
	Draft (m):	6
	For Ships up to:	70,000 dwt
	Lifting Capacity (mt):	20,000
	Crane Capacity:	50 t)x1 / 40(t) x1 / 15(t) x 1

<b>Floating Dock 4</b>	Length Over All (m)	190
	Breadth (m):	27.8
	Draft (m):	6
	For Ships up to:	30,000 dwt
	Lifting Capacity (mt):	12,000
	Crane Capacity:	40(t)x1 / 25(t) x1 / 5(t) x 1

Berth No.	Length (m)	Depth (m)
1	383	12
2	383	10
3	384	13
4	243	9.5
5	123	9
6	288	8.5
7	288	8.5
8	288	9.5
9	271	11
10	230	6





# Yiu Lian Dockyards | Hong Kong | China



友聯船廠有限公司  
Yiu Lian Dockyards Limited

Floating Dock 1	Length Over All (m)	190
	Breadth (m):	26,8

Floating Dock 2	Length Over All (m)	304
	Breadth (m):	45,8



# COSCO Shipping Heavy Industries | Guangdong | China



Yard Area	710,000 m <sup>2</sup>
Berth Line	2,000 m
Annual steel output	120.000 mt

Floating Dock	Length Over All (m)	238
	Breadth (m):	40
	Gantry Crane:	30t x 1, 10t x1

Floating Dock	Length Over All (m)	269
	Breadth (m):	52
	Gantry Crane:	20t x 2, 12t x 1





# Guangzhou Wenchong Dockyard | China



Graving Dock 1	Length Over All (m)	300
	Breadth (m):	65
	Capacity	300.000

Graving Dock 2	Length Over All (m)	431
	Breadth (m):	74
	Capacity	400.000



# Drydock Locations – Rest of Asia



- **Unithai Shipyard – Laem Chabang, Thailand**
- **P.T. ASL Shipyard – Batam Indonesia**
- **Paxocean Pertama – Indonesia**
- **Paxocean Tuas, Singapore**



# Paxocean | Tuas, Singapore



Floating Dock 1	Length Over All (m)	122
	Breadth (m):	22,8

Floating Dock 2	Length Over All (m)	195
	Breadth (m):	34,7

Floating Dock 3	Length Over All (m)	187,5
	Breadth (m):	36,5



# Paxocean Pertama | Batam | Indonesia



Floating Dock 1	Length Over All (m)	300
	Breadth (m):	59

Floating Dock 2	Length Over All (m)	285
	Breadth (m):	48,5

Floating Dock 3	Length Over All (m)	235
	Breadth (m):	40





# ASL Batam Shipyard | Batam | Indonesia



	Land Area	30 Hectares
	Berth (m):	1500 m
Batam graving dock	Length Over All (m)	340
	Breadth (m):	60
Rempang graving dock	Length Over All (m)	240
	Breadth (m):	38
Galang graving dock	Length Over All (m)	180
	Breadth (m):	27



# Unithai | Laem Chabang | Thailand



Yard Area	693.300 m <sup>2</sup>
Jetty / 2 tower cranes	190m

Floating Dock 1	Length Over All (m)	190
	Breadth (m):	36
	Lifting Capacity	13.500 tons

Floating Dock 2	Length Over All (m)	300
	Breadth (m):	52
	Lifting Capacity	48.000 tons







*THANK YOU*



*123 Minories  
London EC3N 1NT  
United Kingdom*

*T | + 44 20 7680 4000  
E | [sales@seadockmarine.com](mailto:sales@seadockmarine.com)*

*Skouze 1  
Piraeus 185 35  
Greece*

*T | + 30 210 429 2251  
E | [piraeus@seadockmarine.com](mailto:piraeus@seadockmarine.com)*